



# Data Sheet



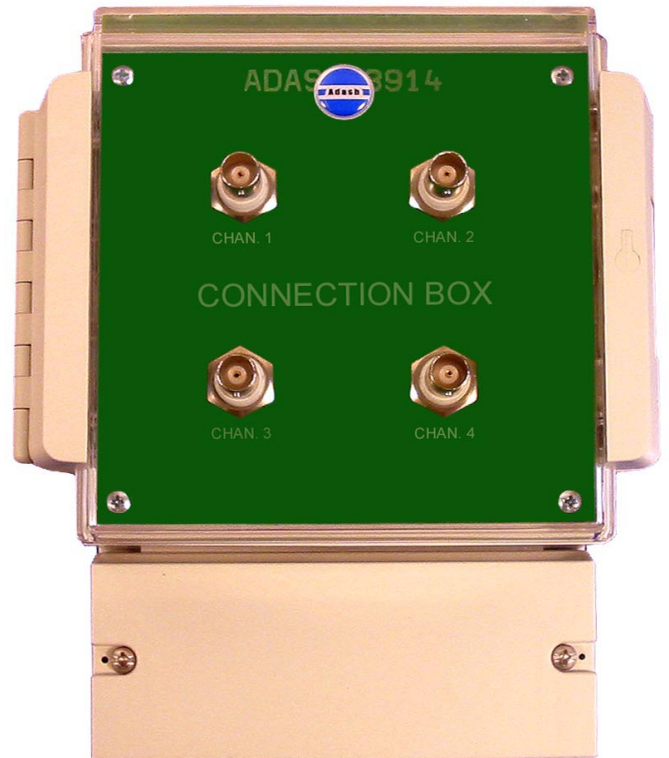
## Adash 3914 4 Channel Connection Box

### Application:

- ☞ Route measurements
- ☞ Measurements on inaccessible points
- ☞ Location of 4 channels in one box

### Characteristics:

- ☞ Protective cover IP 65
- ☞ Using standard BNC connectors
- ☞ Simple installation by 3 screws ( see scheme)
- ☞ Possible installation on DIN rail
- ☞ Dimensions 160 x 190 x 120 (w,h,d in mm)



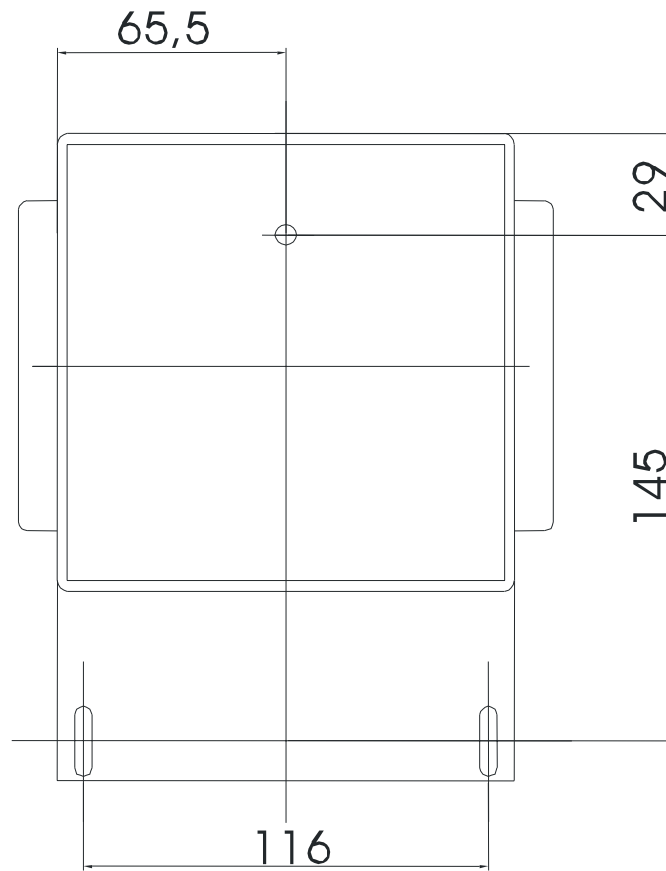
### Description:

Module A3914 is used for signal connection between measurement points with difficult access and a measurement instrument. The A3914 provides connection of several sensors to one place which simplifies route measurement. The IP65 housing provides protection in wet and dusty environments.

The Adash 3914 Connection Box can be used for up to 4 accelerometers. Each accelerometer is connected to BNC connector on the front panel. The box is protected by IP 65 and is simply installed by 3 screws or on DIN rail.

**Scheme:**

All dimensions are in mm.



**Connection scheme:**

<b>A</b>	<b>B</b>	<b>±</b>	<b>A</b>	<b>B</b>	<b>±</b>	<b>A</b>	<b>B</b>	<b>±</b>	<b>A</b>	<b>B</b>	<b>±</b>
<b>CHAN.1</b>	<b>CHAN.2</b>		<b>CHAN.3</b>	<b>CHAN.4</b>							